

LOCATION SKETCH

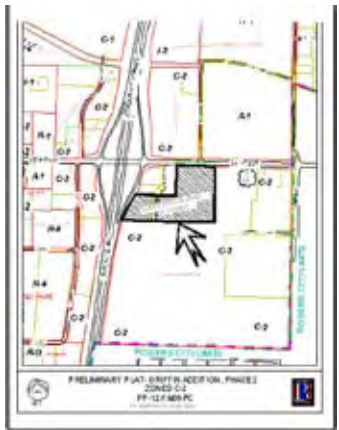
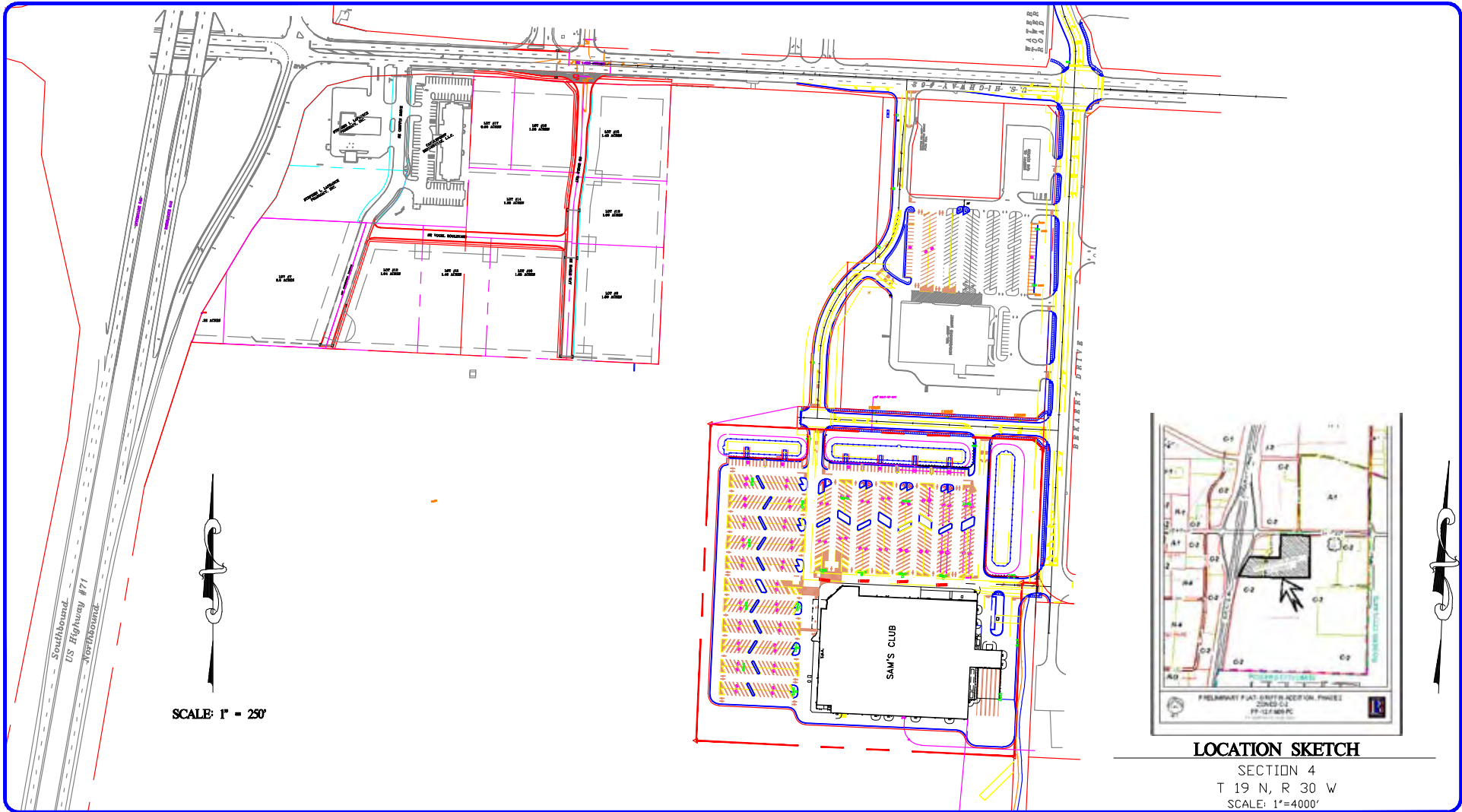
SECTION 4
T 19 N, R 30 W
SCALE: 1"=4000'

ANDERSON ENGINEERING, INC **AYE**
ENGINEERS • SURVEYORS • LABORATORIES • DRILLING

501 E. 15th
JOPLIN, MISSOURI 64804
PHONE (417) 782-7300

EAST POINTE PLAZA
VOGEL PROPERTIES
BENTONVILLE, ARKANSAS

DRAWN BY: DJB	FIELD BY:
DATE: DEC. 2008	FIELD INC:
CLIENT NO:	SHEET NO: 1



LOCATION SKETCH

SECTION 4
T 19 N, R 30 W
SCALE: 1"=4000'

ANDERSON ENGINEERING, INC
ENGINEERS • SURVEYORS • LABORATORIES • DRILLING

501 E. 15th
JOPLIN, MISSOURI 64804
PHONE (417) 782-7399

EAST POINTE PLAZA
VOGEL PROPERTIES
BENTONVILLE, ARKANSAS

DRAWN BY: DJB	FIELD BY:
DATE: DEC. 2008	FIELD IBC:
CLIENT NO.:	SHEET NO.: 1

East Pointe Plaza • Bentonville, Arkansas

