



CITY POINTE
AT MADISON AVENUE



City Pointe at Madison Avenue is a 46,000 square foot shopping center located in one of Southwest Missouri's fastest growing areas. Located in Webb City, a suburb of Joplin, Missouri, City Pointe is the centerpiece of a revitalization that will significantly enhance the city's environment. It's unique design offers end users a variety of space options.



This 8,000 square foot restaurant is located on a Sam's Club out parcel with I-44 visibility in Joplin, MO. It is located near most of Joplin's hotel and motels and several nationally branded restaurants. The buildings improvements are fantastic and its equipment allow an end user to begin operation immediately.



This 5,500 square foot restaurant is a landmark in downtown Joplin, MO. The properties unique exterior and interior architecture will impress any potential buyer. The flexible design allows the buyer many possible uses.



Select Projects of VOGEL PROPERTIES, LLC

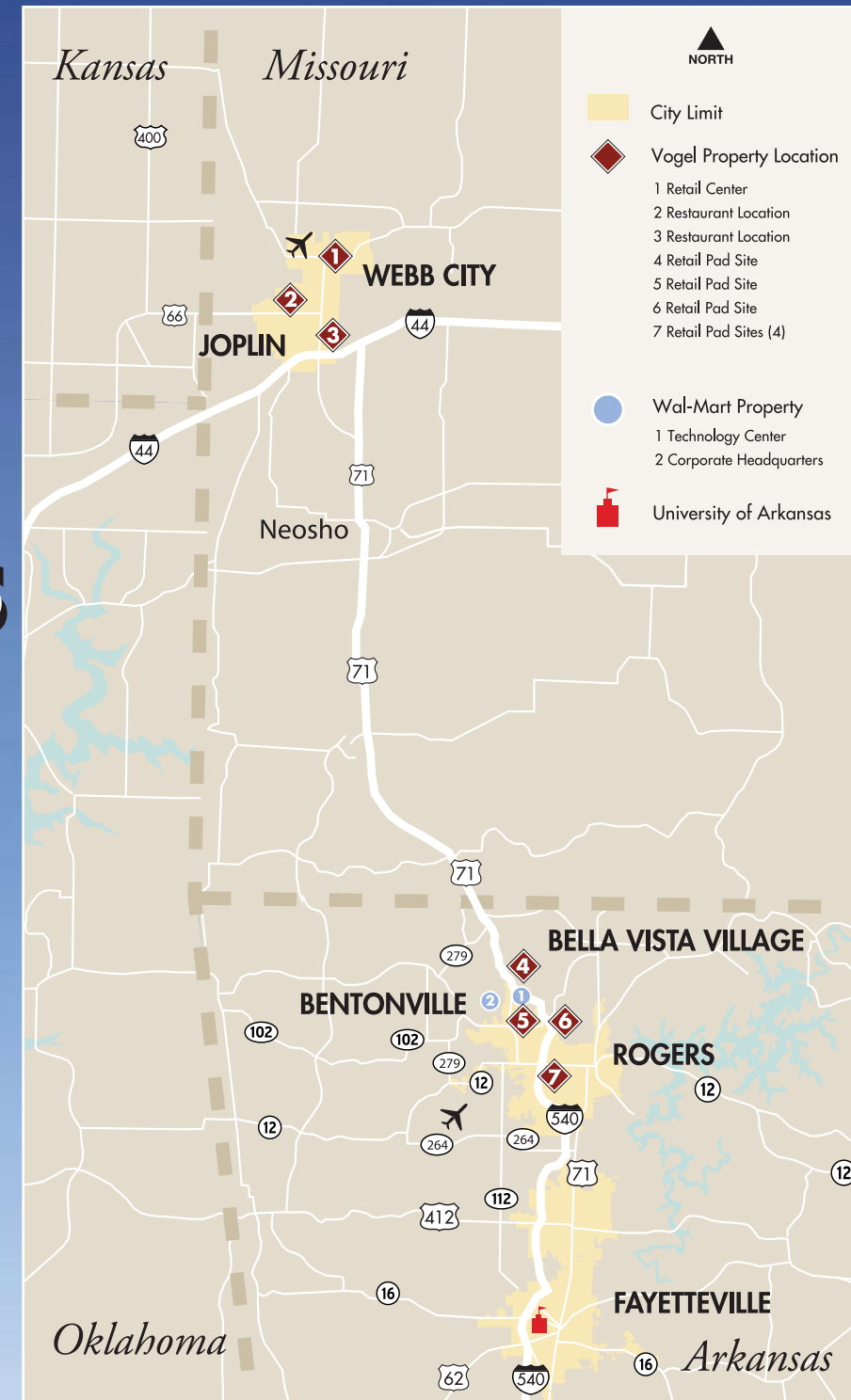
P.O. Box 187 | Galena, Kansas 66739 | 417.434.1900 | www.vogelpropertiesllc.com

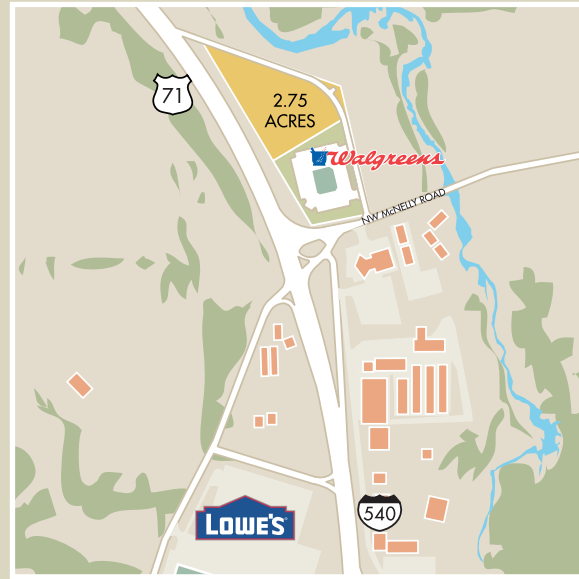
Retail Properties

VOGEL PROPERTIES, LLC

MISSOURI
JOPLIN
WEBB CITY

ARKANSAS
BELLA VISTA
BENTONVILLE
ROGERS
FAYETTEVILLE





BELLA VISTA

The Location

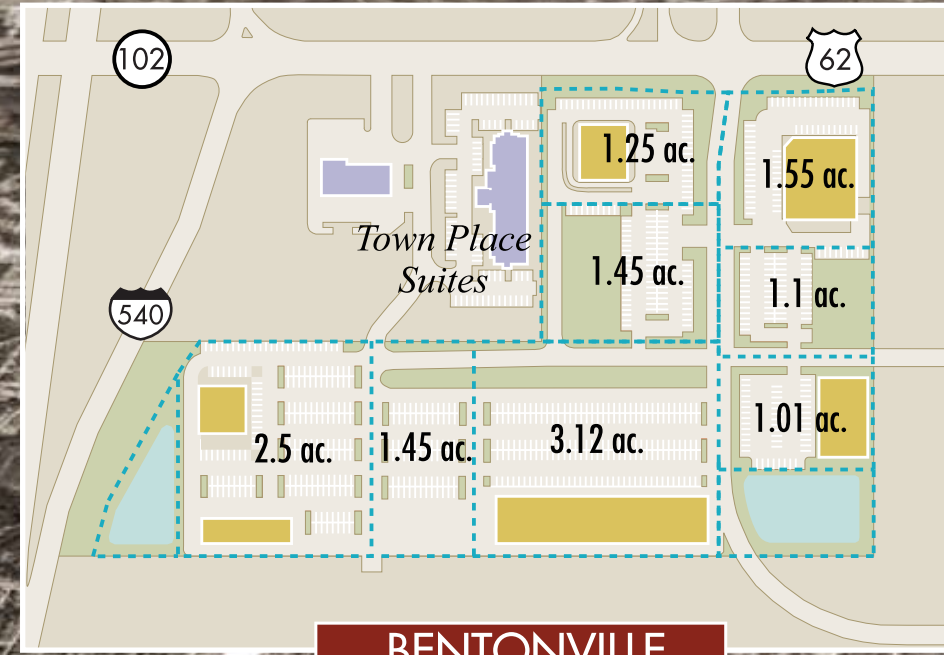
Located just south of Bella Vista's main town center, these two commercial pads offer great access. Walgreen's and Lowe's are currently under construction at this highly visible corner. Both pads offer great views to Sugar Creek, creating a perfect setting for restaurants with outdoor seating.



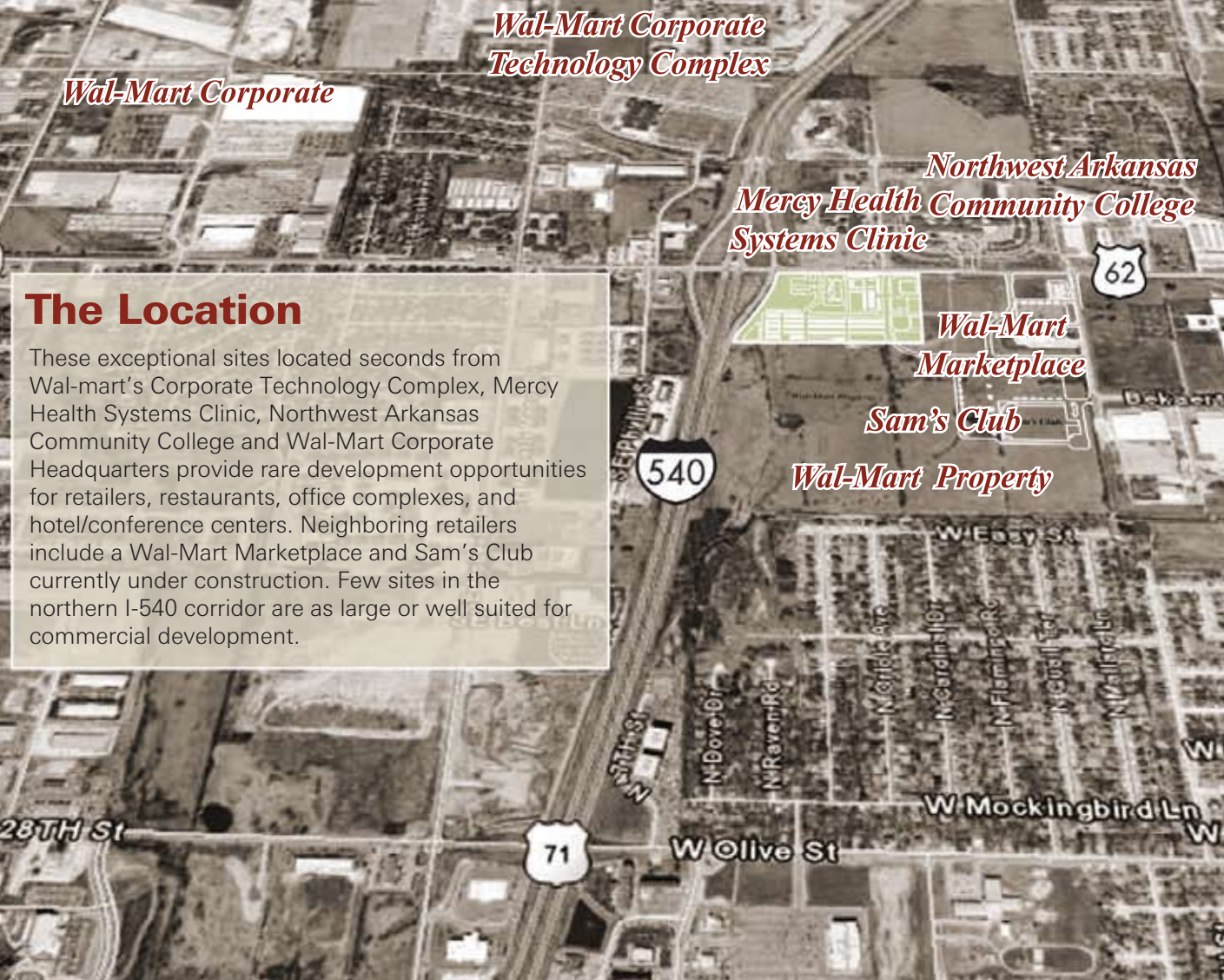
ROGERS

The Location

Located in Northwest Arkansas' most vibrant commercial corridor, these pad sites are ideal for restaurant or hotel development. These pads are situated just south of Scottsdale Crossing anchored by Kohl's, Belk Department Store, Barnes & Nobel and many nationally branded restaurants. The Amerisuites Hotel maintains a 90% occupancy rate.



BENTONVILLE



The Location

These exceptional sites located seconds from Wal-mart's Corporate Technology Complex, Mercy Health Systems Clinic, Northwest Arkansas Community College and Wal-Mart Corporate Headquarters provide rare development opportunities for retailers, restaurants, office complexes, and hotel/conference centers. Neighboring retailers include a Wal-Mart Marketplace and Sam's Club currently under construction. Few sites in the northern I-540 corridor are as large or well suited for commercial development.